

GSM SMS Security Alarm System User Manual

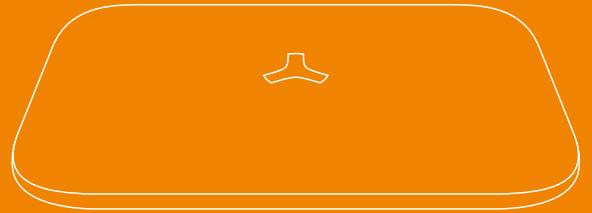


Table of Content

02	Get to Know Your System
04	Quick Start Guide
06	Control Panel Installation
11	Working Status of Control Panel
13	Four Ways to Control System
14	Two Ways to Program the System
15	Included Accessories
15	Wireless Remote Control
17	Wireless P.I.R Motion Detector
20	Wireless Door/Window Sensor
22	Suggested Security System Setup
23	Wireless Accessories Enrolling, Clearing and Zone Setup
23	Connecting Wireless Accessories (Wireless Accessories Enrolling)
24	Delete All Enrolled Accessories
24	Restore System to Default Setting
25	Zone Setup
29	Connecting Wired Accessories & Linkage Electronic Facilities
31	Download APP
32	APP Setting
34	Programming System by SMS Text
34	SMS Text Operation
47	Specification
49	Frequently Asked Questions

The Model:

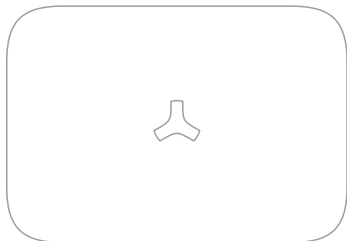
- ☐ **2G GSM** GSM/SMS Security Alarm System
- ☐ **2G PLUS** GSM/SMS Security Alarm System
- ☐ **3G PLUS** GSM/WCDMA SMS Security Alarm System



Get to Know Your System

Control Panel

The control panel is the brain of security alarm system, which is able to communicate with all wireless sensors. When alarm occurs, the built-in siren will hoot loudly to deter intruders. The system will notify the family members by auto-dialing the preset phone numbers. The control panel can receive command from remote control, SMS Text or Apps command, and response to the alarm management in time.



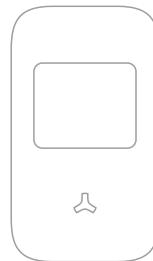
Wireless Remote Control

The remote control allow you to control your security system when you are away or come back. When emergency happens, press the emergency button to send an emergency signal to the control panel.



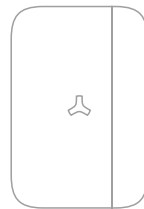
Wireless P.I.R. Motion Detector

The passive infrared motion detector is designed to sense human movement. It will detect the infrared radiation emitted from intruders and send the signal to control panel.



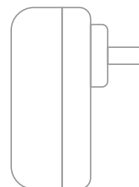
Wireless Door/Window Sensor

It is a magnetic sensor for any opening like door and window. It will send a wireless signal to the control panel, when a door or window is opened.



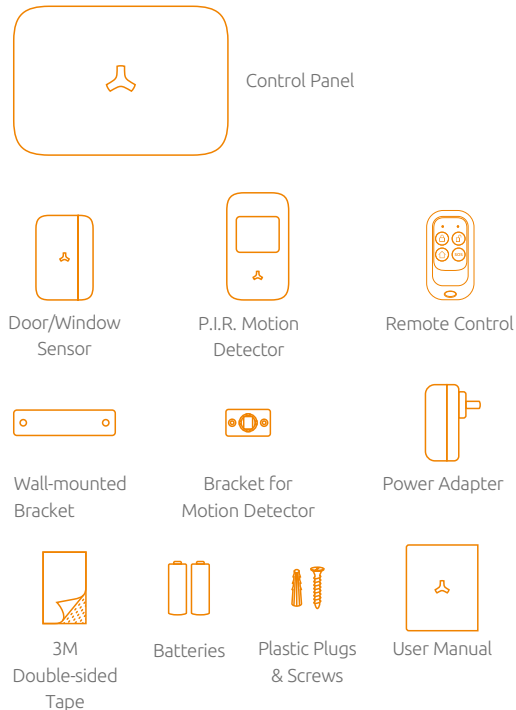
Power Adapter

The power adapter is used to provide main power for the control panel. The built-in 7.4V/1000mA rechargeable battery enable the system working for 16 hours in the event of a power failure.

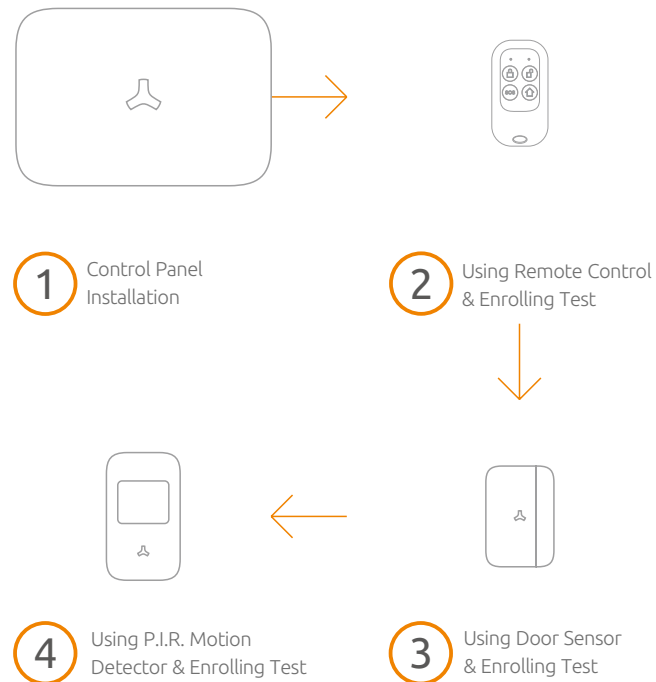


Quick Start Guide

Please remove all supplied contents from packaging as below. If there's anything missing, please return to your place of purchase.

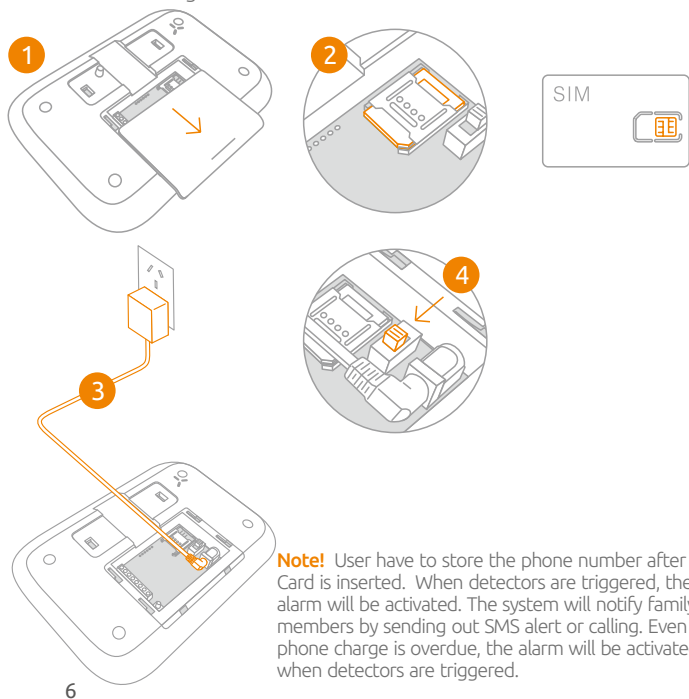


Follow these easy steps to install your alarm system !






Control Panel Installation

1. Gently open the battery bay cover.
2. Insert a SIM card fix it.
3. Insert power adapter's barrel plug to adapter socket.
4. Slide the power switch to ON position.
5. Test enrollment of accessories.
6. Preset phone number after Sim Card is inserted so that the control panel can be remotely controlled and when alarm is activated, it will send and receive messages.




Note! User have to store the phone number after SIM Card is inserted. When detectors are triggered, the alarm will be activated. The system will notify family members by sending out SMS alert or calling. Even the phone charge is overdue, the alarm will be activated when detectors are triggered.

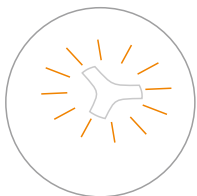
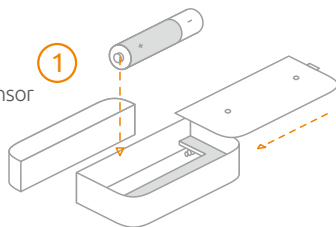
Using Remote Control & Enrolling Test

Using remote control to control the system when you are away or come back home. Once there's an emergency situation, press  button once for help, both LED flashes once, the system immediately goes in to an alarm condition. Press the Emergency Call  Button, if the alarm is activated, the remote control has been enrolled to the system. Silence the siren by pressing Disarm  Button on remote control.

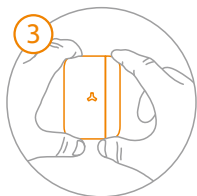


Using Door Sensor & Enrolling Test

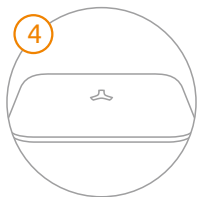
1. Open the case and install the battery properly.
2. Arm the system by pressing arm button  on remote control.
3. Depart the transmitter and magnet.
4. If the alarm is activated, the door sensor has been enrolled to the system.
5. Silence the siren by pressing disarm button on remote control.



Indicator goes on to enter arming state.

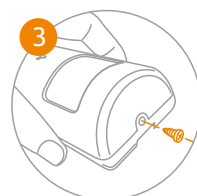
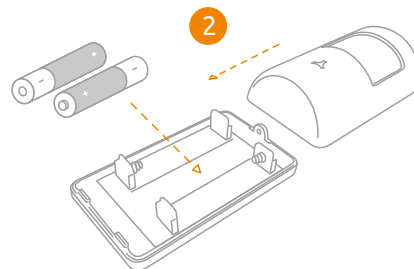


Indicator light up in red when transmitter and magnet departed.



Using P.I.R. Motion Detector & Enrolling Test

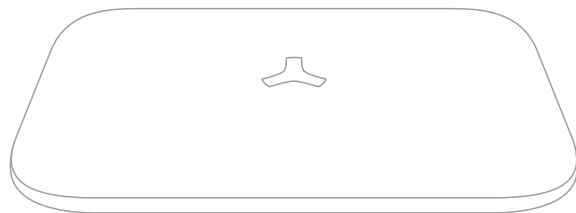
1. Press the clip and open the case
2. Insert the battery properly, and then close the cover
3. Fasten the screw for case
4. Press arm button on remote control, the LED indicator of control panel goes on.
5. Press the test button of P.I.R. motion detector
6. If the alarm is activated, the motion detector has been enrolled to the system.
7. Silence the siren by pressing disarm button on remote control.





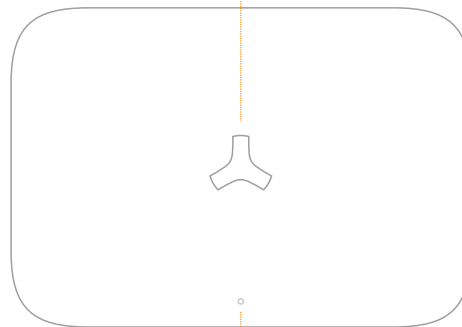
Features

- Frequency-Hopping Spread Spectrum technology for anti-interference
- Two-way supervise the detector per 12 hours
- Change your remote control names
- 16 wireless zone(customized zone names to recognize the location)
- Central Monitoring Station Setup
- Cellular communication by SMS Text or Apps, easy control
- Up to 50pcs sensors & 10 remote controls can be expanded by auto learning
- 2 wired zone especially for smoke / gas / vibration / detector, IR beams etc.
- Text to preset 3 groups of SMS number & auto-dial 5 groups of phone number and CMS number
- Internal siren sound and mute mode for optional
- Immediate SMS alerts for low battery of detectors, power lost and power recovery
- Built-in 7.4V/1000mA battery ensure system working properly for 16 hours after power lost
- Alarm output enable you to trigger the equipment as light, TV etc. to deter the intruder

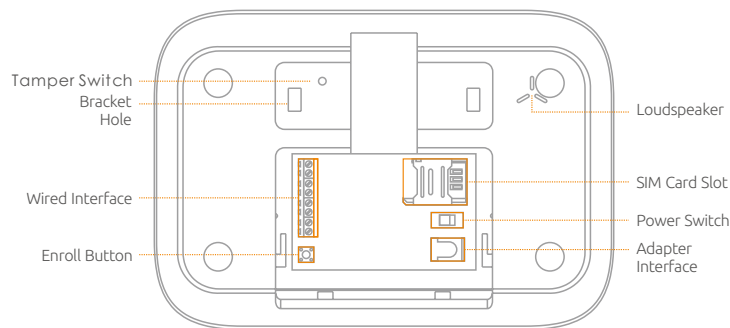


Working Status of Control Panel Appearance

White LED: Arming / Disarming
Red LED: Control Panel Status



Green LED: AC Power
Yellow/Red LED: GSM Signal Indicator





Status LED Indication



Red LED Normally On:
System enters enrolling status



Red LED Flashes Quickly:
Receive a SMS



Red LED Flashes Normally:
Alarm occurs.



White LED Normally On:
System armed



White LED Off:
System Disarmed



White LED Flashes Normally:
System armed in stay mode.



Power/Signal LED Indication



AC Power Off:
Green LED off



AC Power On:
Green LED normally on



GSM Network	AC Power On	AC Power Off
Searching GSM Network	Yellow LED flashes quickly	Red LED flashes quickly
GSM Network Found	Yellow Power LED flashes normally	Red Power LED flashes normally



Four Ways to Control Your Security Alarm System

You can control your security alarm system by arming , disarming, stay arming or sending emergency signal via remote control, SMS text command, phone remote control and mobile apps.



1 Using a Remote Control:

The compact remote control is very easy to carry. The multi-function key enable you to arm the system when you are away, and disarm it when you come back. It's a simple and valuable tool which can be reached easily for the emergency happens at your home.

2 Using SMS Text Commands:

Please refer to Page 34 for details of SMS text command operation.

Disarm: Password#0

Arm: Password#1

Stay Arm: Password#2

Note! There's no command for sending emergency call.

3 Using Mobile Apps:

Please enter keyword"Ontips"to download the apps from the App Store or Google Play. Fill in the Control Panel Name & Sim Card Number of control panel to enter the user interface.

Note! There's no command for sending emergency call.

4 Remotely Control System by Phone

In the event the alarm, the alarm system will call the preset phone number, user can pick up the phone, monitor the site, and remotely control system by entering numbers. Users can call the alarm system number, the system automatically enters monitoring status, users can enter numbers to control it remotely.

Two Ways to Program Your Security Alarm System

1 Method 1

Send a text of “?” to phone number of control panel, the system will reply an operation guide message to your phone. You can control the system by using the command codes listed. Please refer to page 34 for command codes.

2 Method 2

Please enter keyword “Ontips” to download the apps from the App Store or Google Play. Fill in the Control Panel Name & Sim Card Number of control panel to start programming.



Recommended! Simple and easy to use!



Included Accessories



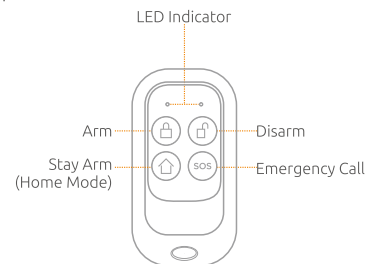
Wireless Remote Control

The compact and elegant remote control is easy to carry. It is designed to fit on a key chain, a purse, a pocket or to be hidden in the car sun visor. This remote control act as multi-purpose key for arming, disarming, arming stay, and emergency call.

LED Indication:

LED Flashes:

Transmitting the signal to control panel.



Mute Mode

Press stay **arm** button, then press **arm** or **disarm** button within 3 seconds to enter into arming or disarming state in mute mode without disturbing others.

Button Manual



Arm

Press the **arm** button to arm the system before leaving your home, arming LED (left) flashes once, the siren beeps once to enter the arming state. Any detectors triggered will activate the system to alarm immediately. The system simultaneously calls the preset phone numbers. Once Exit delay function is set, system will be delayed arming accordingly. When you arm the system, in case of delay time less than 10 seconds, control panel will beep once every second. While delay time more than 10 seconds, control panel will beep once every 2 seconds, the sound will increase in tempo for the last 10 seconds for the "hurry up" notification.



Disarm

Press **disarm** button before entering your home disarming LED (right) flashes once. Then you are able to move freely in your home without triggering the alarm. In the event of alarm, you can press this button to disarm the system and silence the siren.



Stay Arm (Home Mode)

Press the **stay** button, arming LED (left) flashes once, the siren beeps once, system is in stay arm mode. The accessories in home mode are disarmed, this allows the user to move freely at home, while the rest of the system is fully armed, the accessories in normal zones will activate an immediate alarm when triggered.



Emergency Call

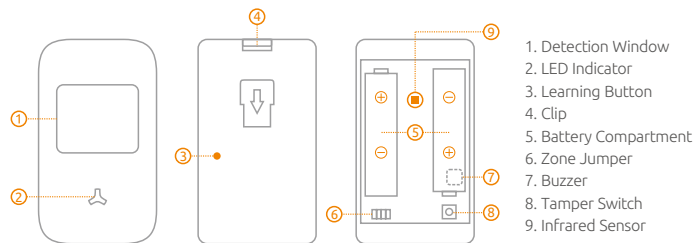
Once there's an emergency situation, no matter what state the alarm system is in, press **SOS** button once for help, both LED flashes once, the system immediately goes into an alarm condition and notify your family.



Wireless P.I.R Motion Detector

Features

The passive infrared sensor with novel and beautiful style, perfect streamline can be easily installed. It is designed to detect human movement indoor. Adopted advanced fuzzy logic chip and intelligent analysis distinguish signal between body movement and interference to minimize false alarms. The built-in buzzer remind you low battery state and event of tamper alarm, which ensure your safety.



Infrared Sensor: Detects the infrared rays released by human body motion. Please do not touch the surface and keep it clean.

Tamper Switch: Once the case is opened, the tamper switch will be triggered, generating an alarm signal.

Status Indicator



LED flashed once:
Movement is detected.



LED flashes 5 times, and buzzer beeps 5 times:
Power on, tamper alarm, low battery indication. If it's in low battery state, please replace it only with 1.5V/AA LR6 Manganese Dioxide Cell (EXCELL, GP) immediately.

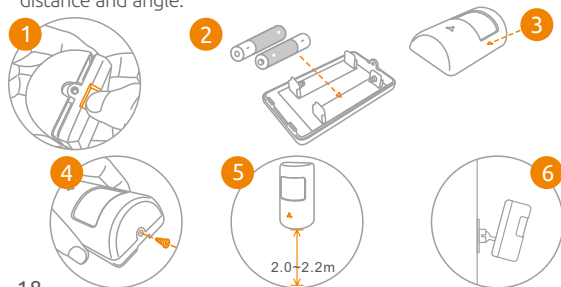
Installation & Walk Test

Testing Mode: When the power is on, the LED indicator flashes 5 times, and buzzer beeps 5 times to enter testing mode after 40 sec preheat. In the test mode, it will enable the LED indicator to light and control panel to alarm every time once a movement is detected. After the 20th detections, LED lights light up 2 times to indicate that it is going to enter into sleep mode.

Sleeping Mode: The sleeping time of PIR approximately 4 minutes to save power. No movement detected within 4 minutes, the PIR detector goes back to the working mode. Once PIR is triggered, the PIR will light in red and alert alarming. PIR will re-enter into sleep mode after 3 times detections during the working mode. Any movement detected within 4 minutes, the PIR will not light in red and the alarm will not be activated. And it will extend the sleep time by another 4 minutes.

Installation:

1. The motion detector should be installed in entry or exit which intruder can easily enter.
2. The detector is more sensitive to cross-movement than to direct movement. The performance of the detector is optimal when detection direction is across the walking direction of intruders.
3. Press the clip, insert the battery properly, and then close the cover.
4. Using screws to fix the bracket of detector on the wall, attach the detector to the bracket.
5. Keep LED indicator at the right direction. The fixing height is about 2~2.2m from the ground.
6. Adjust installation height or bracket to change the detection distance and angle.



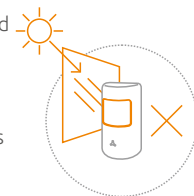
Walk Test:

1. When the power is on, the LED indicator flashes five times and buzzer beeps five times to enter working state.
2. Walk across detection area and watch the LED indicator to make sure it flashes once when detecting the movement. After one detection, it will detect once every one minute.

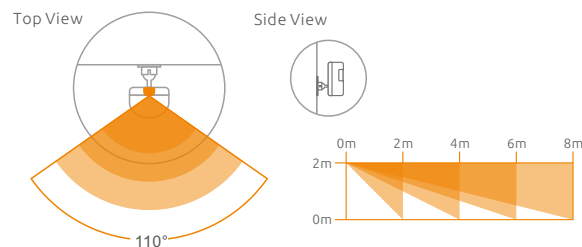


Notice

1. Avoid mounting the detector close to places where heat changes fast or air stream flows frequently. (ie. Air conditioner, tube light, oven, waver, refrigerator etc.)
2. Avoid it facing to window which can be easily interfered by complicated environment. (ie. sunlight, crowds, or flowing cars etc.)
3. The product can reduce the possibility of accident, but the user is advised to take all necessary precautions for the safety and the protection of the property.



Detection Area



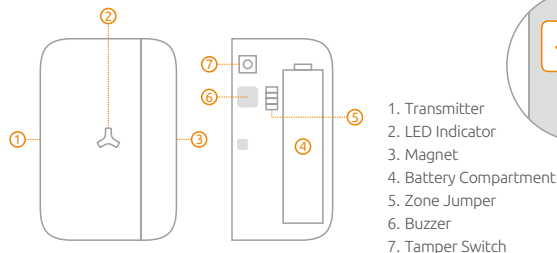
Connecting P.I.R. Motion Detector to Control Panel

The new-bought P.I.R. motion detector should be enrolled to the control panel before use. For specified operation, please refer to the manual of alarm system.



Wireless Door/Window sensor

The Door/Window Sensor can be installed on doors, windows and any other objects that open and close. The sensor transmits signal to control panel when the magnet mounted near the sensor is moved away. The tamper protection ensures that sabotage attempts to move the sensor will result in an alarm activation.



Tamper Alarm: Once intruder attempts to move the sensor, built-in buzzer beeps. The control panel will send tamper alarm message to user at the first time.

Zone Jumper: Please follow manual of alarm system for zone1 setup. The door sensor is set in normal zone as default.

Working Status:



LED flashes once:


Door or window is opened.
and the transmitter sends signal to the control panel.

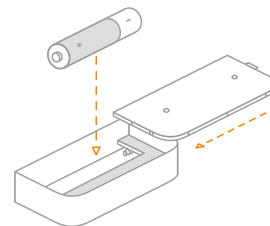
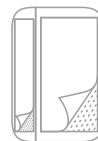


LED flashes 5 times, and buzzer beeps 5 times:

Tamper alarm, low battery indication. If it's in low battery state, please replace it only with 1.5V/AA LR6 Manganese Dioxide Cell (EXCELL, GP) immediately.

Installation:

1. Open the case and install the battery properly.
2. Sensor can be installed on door or window that open and close.
Make sure the installed position have been already cleaned.
3. Remove the paper strip of the double-sided tape on the back of transmitter and magnet. Carefully mount the transmitter on the door frame and the magnet on the door.
4. Keep LED Indication light  at the right direction.
Make sure the magnet is on the right of the transmitter.
5. Place the transmitter in the desired location, mount the magnet no more than 1cm away from the transmitter.
6. Avoid mounting sensors in areas with a large quantity of metal and electric wiring.

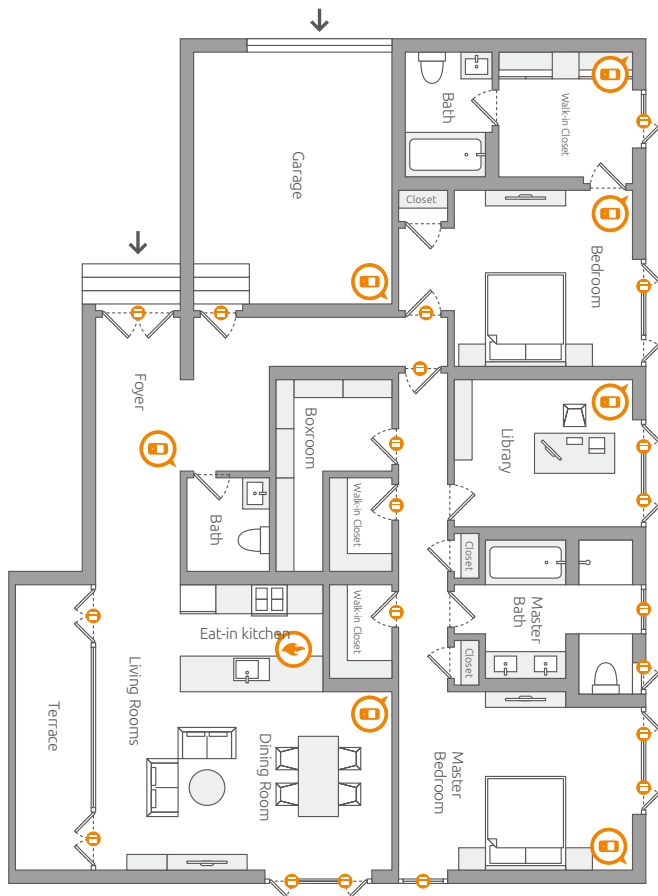


Note! The door sensor is set in Normal Zone1 as default. It will cause an immediate alarm if the magnet departs from the transmitter more than 2cm in arming state.





Suggested Security System Setup

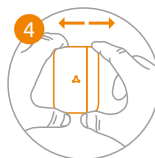


Wireless Accessories Enrolling, Clearing and Zone Setup



Wireless Accessories Enrolling

1. Press the Enroll Button , the control panel enters enrolling status, the LED lights up in red. (Press again the Enroll Button within 20 seconds to exit enrolling state.)
2. Connecting PIR Sensor to Control Panel:
Press the test button on the back of PIR Sensor.
3. Connecting Remote Control to Control Panel:
Press any button on the remote control.
4. Connecting Door Sensor to Control Panel:
Depart the transmitter and magnet
5. System beeps once, the LED light flashes once, the enrollment is successful.
If system beeps twice and the LED light flashes once, the accessories have been enrolled before.
If three beeps are heard and LED light flashes once, the storage is full.

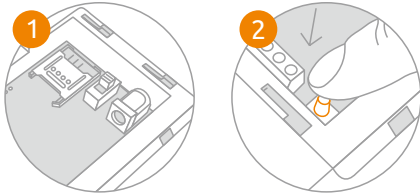


Note! Wireless siren is not included as wireless accessory. For specific details, Please refer to the manual of siren. If accessories zones are changed, you have to reconnect the accessories to the control panel. User can not trigger accessory's tamper switch button to enroll into system.



Delete Enrolled Wireless Accessories

Press and hold the enroll button for 6 seconds until one beep is heard. All enrolled wireless accessories will be deleted.



Restore System to Default Settings

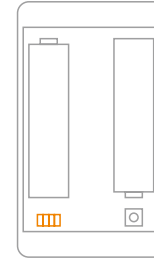
Press the tamper switch continuously for 5 times until one long beep is heard.
All preset number will be deleted at once and the system is restored to default setting successfully.

Note! Restoring operation will not delete the enrolled accessories.

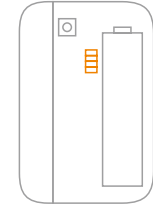


Zone Setup

PCB Diagram-Zone Jumper



PIR Motion Detector

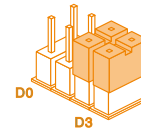


Door/Window Sensor

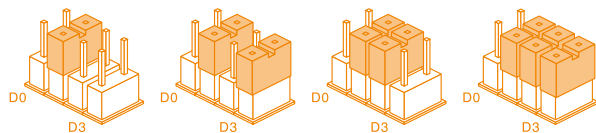


Normal Zone Setup

The accessory is set in normal zone (immediate alarm zone) as default. Once triggered in arming state, the system will receive signal and activate the alarm immediately.



Wireless Zone 4

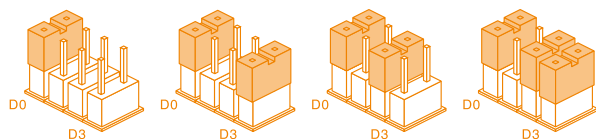


Wireless Zone 5

Wireless Zone 6

Wireless Zone 7

Wireless Zone 8

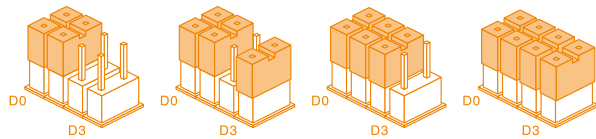


Wireless Zone 9

Wireless Zone 10

Wireless Zone 11

Wireless Zone 12



Wireless Zone 13

Wireless Zone 14

Wireless Zone 15
(24 Hours Zone 1)

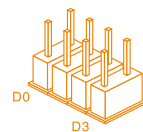
Wireless Zone 16
(24 Hours Zone 2)

Note! PIR Motion Detector is set in stay (home) mode zone as default.
Door/Window Sensor is set in Normal Zone 4 as default.

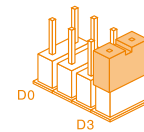


Stay Mode (Home Mode) Zone Setup

Stay mode is known as "part arm". When system is stay armed, the accessories in home mode are disarmed. This allows the user to move freely at home. While the rest of the system is full armed, the accessories in normal zones will activate an immediate alarm when triggered.



Home Mode 1
(Wireless Zone 1)

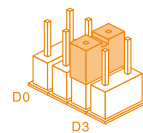


Home Mode 2
(Wireless Zone 2)



Single Delay Zone Setup

If the Exit/Entry Delay Time is set, accessories in single delay zone, will be delayed for arming and alarming, Home Mode Zone accordingly. But accessories in Normal Zone Home Mode Zone and 24-Hour Zone will not be delayed.

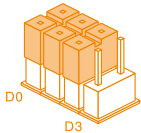


Single Delay Zone
(Wireless Zone 3)

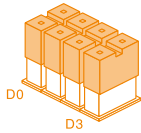


24-Hour Zone Setup

No matter what state the alarm system is in, once the accessories in 24-Hour zone are triggered, the control panel will get the signal and alarm immediately.



24-Hour Zone 1
(Wireless Zone 15)

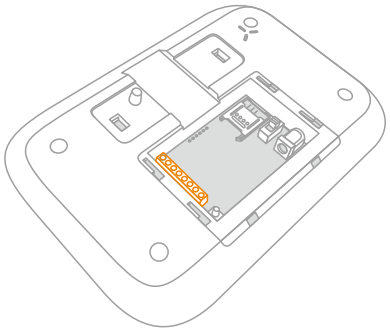
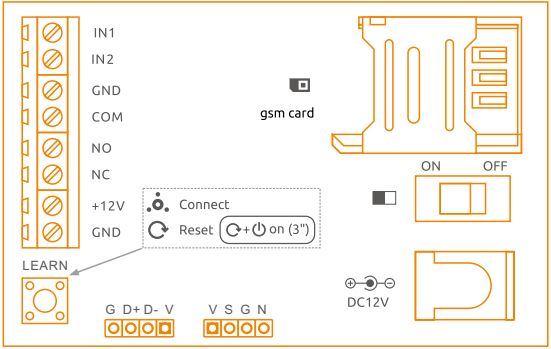


24-Hour Zone 2
(Wireless Zone 16)

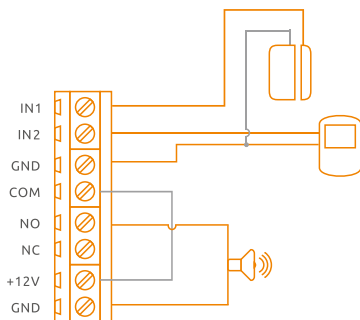
Note! It's highly recommended to set the smoke detector, gas detector and perimeter detectors at 24-Hour Zone.



Connecting Wired Accessories & Linkage Electronic Facilities



Wired Interface 1
Wired Interface 2
Ground
Common Port
Normal Open
Normal Close
Power Output for
Wired Accessories
Ground



Wired Accessories:

It supports 2 groups of wired accessories.

Please choose the wired sensor types after connected.

Connect Wired Sensor to Wired Zone 1

Connect N.C. Type Door Sensor to Wired Zone. One cable for the IN1 or IN2 block, another for GND block.

Send text 74 to choose wired sensor type to be N.C.

Test if the alarm occurs when wired sensor is trigger.

Connect Wired Siren

Connect the Negative Pole to GND block,
the Positive Pole to N.O block.

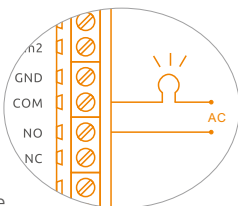
Then link COM block and +12V block.

Linkage AC Electronic Facilities:

It is able to turn on electronic facilities like
lights, or fences to deter the intruder
immediately in the event of alarm.

Note! The max output of Built-in Battery is 8.4V.

When wired siren is connected, please make sure
the power supply is on for working properly.



Download APP

Please download the APP from App Store or Google Play by
entering the keyword"Ontips".



Ontips

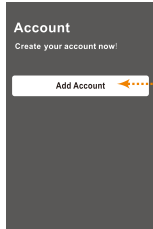




App Setting

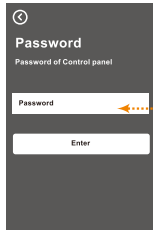
Using Mobile App to control system: Please download the Apps from App store or Google Play by entering the keyword "Ontips". You should add account before entering. Please refer to below.

① Please select model before you create account



Please click to create an account for GSM Alarm System.

②



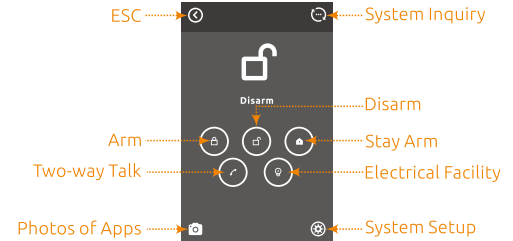
Default Password is 1234, once you change the password, you should enter the new one.

③

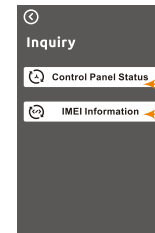


Home or Office Name
Number in Control Panel
Number of Your Mobile Phone

④

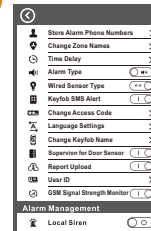


⑤

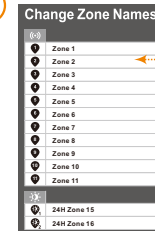


Control Panel Status
IMEI Information

⑥



⑦



Change zone name to identify sensor types and location.

Character Limits:
16 characters in English.



Programming System by SMS Text Operation

SMS Text Operation

It's easy for users to manage functionality through your cell phone by sending SMS text commands listed as below. Send a text of "?" to the SIM card number of control panel, the system will reply you a main operation guide menu.

Send "**password#command code**" (original password is 1234) to setup, for example "**password#5**" to store phone numbers.

Note! Users have to store the phone number after Sim Card is inserted so that the control panel can be remotely controlled and when alarm is activated, it will send and receive messages.

Send this operation code
from your cell phone:

?

SMS reply you will receive:

Disarm: 0
Arm Away: 1
Arm Stay : 2
Status Inquiry: 3
Alarm Management: 4
Store Phone Numbers: 5
Change Zone Name: 6
Other Setup: 7
System Language: 8
Electrical Facility Control: 9
Change Keyfob Name: 10

Disarm

Send this operation code
from your cell phone:

1234#0

System disarmed with all
detectors deactivated.

SMS reply you will receive:

System Disarmed.

Arm

Send this operation code
from your cell phone:

1234#1

System fully armed with
all detectors activated.

SMS reply you will receive:

System Armed in Away Mode.

Arm Stay

Send this operation code
from your cell phone:

1234#2

The Arm/Stay function will arm the
system with sensors in normal zone
activated immediately, but sensors
in home mode zone disabled.

SMS reply you will receive:

System Armed in Stay Mode.



Status Inquiry

Send this operation code
from your cell phone:

1234#3

SMS reply you will receive:

(Please Text Below Command Code
to Inquiry the System Setting)
31: Control Panel Status
32: IMEI Information

System Status Inquiry

Send this operation code
from your cell phone:

31

System Status:
Away Armed/Disarmed/Stay Armed
AC Power: On/Lost/Recovered
Alarm Type: Audible /Silent
Local Siren OFF/ON
SMS Alert for Keyfob Operation: On/Off
Wired Sensor Type: N.O/N.C

SMS reply you will receive:

System Status: Away Armed
AC Power: On
Alarm Type: Audible
Local Siren:Off
SMS Alert for Keyfob Operation: Off
Wired Sensor Type: N.C.

IMEI Information Inquiry

Send this operation code
from your cell phone:

32

SMS reply you will receive:

IMEI No.:*****

IMEI is International Mobile Equipment Identity number, consist of 15 digits "electronic serial number" which is unique to identify valid devices. Every alarm panel will be assembled with an unique IMEI number to make sure it's original from manufacturer.



Alarm Management

Send this operation code
from your cell phone:

1234#4

SMS reply you will receive:

(Please Text Below Command Code to
Manage the System)
41: Turn On the Local Siren
42: Turn Off the Local Siren
43: Two-way Talk

Turn On the Local Siren

Send this operation code
from your cell phone:

41

SMS reply you will receive:

Local Siren: On

Turn Off the Local Siren

Send this operation code
from your cell phone:

42

SMS reply you will receive:

Local Siren: Off

43

Send '43' to the SIM card number.
The control panel will call back.
You can now listen in and have a
two-way talk.



Store Phone Numbers

Send this operation code from your cell phone:

1234#5

Forward (copy and paste) this text message to control panel phone number. Add phone numbers that you want to control over. Phone numbers includes 3 SMS numbers (where you want security message and alerts sent), 5 Tel numbers (to receive alarm calls) and 2 CMS numbers. It's recommended to set the numbers according to the priority.

Note! Phone numbers which haven't been stored will be refused.

SMS reply you will receive:
(Fill in the Phone Numbers and Text to System)

SMS:

1:
2:
3:

TEL:

1:
2:
3:
4:
5:

CMS:

1:
2:

Phone Numbers Stored.

SMS:

1:88888888
2:77777777

3:

TEL:

1:
2:
3:
4:
5:

CMS:

1:
2:



Change Zone Name

Send this operation code from your cell phone:

1234#6

Forward (copy and paste) this text message to control panel phone number. Add zone name, then send it. Zone information includes fourty wireless zone, two 24-hour zone . Two wired zone name cannot be changed .
Wireless Zone 3 is Single Delay Zone.
Wireless Zone 1 is Home Mode 1
Wireless Zone 2 is Home Mode 2

Character Limits

20 characters for English.

Note! After zone names are changed, if any alarm occurs, users can identify the sensor types and location quickly.

SMS reply you will receive:
(Change Zone Name and Text to System)

1: Wireless Zone 1
2: Wireless Zone 2
3: Wireless Zone 3
4: Wireless Zone 4
5: Wireless Zone 5
6: Wireless Zone 6
7: Wireless Zone 7
8: Wireless Zone 8
9: Wireless Zone 9
10: Wireless Zone 10
11: Wireless Zone 11
12: Wireless Zone 12
13: Wireless Zone 13
14: Wireless Zone 14
15: 24H Zone 15
16: 24H Zone 16

Zone Name Changed.
1: living room door
2: Living Room PIR
3: living room window
4: Restaurant PIR
5: the bedroom door
6: Bedroom Window
7: Bedroom PIR
8: wardrobe door
9: bathroom window
10: The Library Door
11: PIR Library
12: balcony door
13: Garage Door
14: Garage PIR
15: Kitchen Gas
16: kitchen fumes



Other Setup

Send this operation code from your cell phone:

1234 #7

- 71-72: User can set the siren to be audible or silent when it's alarming.
- 73-74: Choose the types of wired sensors after they are connected.
- 75-76: When system alarms, user can choose to get SMS alerts or not if someone disarm it by keyfob.
- 77: Change the password
- 78~79: Set exit/entry delay time for accessories in single delay zone. It allows users to leave or enter home within the programmed time without activating an instant alarm.
- 710-711: User can turn on or off the supervision for door sensor, once it's enabled, user cannot arm the system when door or window is open.

SMS reply you will receive:

Alarm Type:
71: Audible(Default)
72: Silent
Wired Sensor Type:
73: N.O.
74: N.C. (Default)
SMS Alert for Keyfob Operation:
75: On
76: Off (Default)
Change Password:
Old Password#77#New Password#
Alarm Delay:
78#Exit Delay Time#
79#Entry Delay Time#
Supervision for Door Sensor:

710: Off (Default)
711: On
Central Monitoring Station Setup:
712: Report Upload On
713: Report Upload Off (Default)
Password#714#User ID#

Send this operation code from your cell phone:

71

72

73

74

75

76

SMS reply you will receive:

Alarm Type: Audible

Alarm Type: Silent

Wired Sensor Type: N.O.

Wired Sensor Type: N.C.

SMS Alert for Keyfob Operation: On

SMS Alert for Keyfob Operation: Off

Old Password#77
#New Password#

Password has been reset!

78#Exit Delay
Time#

Exit Delay Time (0~300sec): "***"S

79#Entry Delay
Time#

Entry Delay Time(0~300sec):"***"S

Note! The Exit/ Entry Delay Time is working for accessories in Single Delay Zone. The alarm will be activated immediately when accessories in other zone are triggered. Once entry/exit delay time is set, when system is armed, in case of delay time less than 10 seconds, control panel will beep once every second. While delay time more than 10 seconds, control panel will beep once every 2 seconds, the sound will increase in tempo for the last 10 seconds for the "hurry up" notification. Once an entry is detected, it will allow the user to enter and disarm the system within the programmed entry time.

Supervision for Door Sensor

SMS reply you will receive:

710

Supervision for Door Sensor: Off

711

Supervision for Door Sensor: On

Note! when this function is enabled, you will always be informed with control panel beeping and text message to your phone if your garage door is left open. User can force to arm it by pressing "arm" button again with 5 seconds.

Central Monitoring Station Setup

712

Report Upload On

713

Report Upload Off(Default)

Password#714#
User ID#

User ID changed successfully!

1. Program User ID for Central Monitoring Station

Note! The user ID is the Central Station Account number, which should be 4 digits between 0 and 9.

2. Note! Report upload function is disabled as default. If the user needs to connect the central monitoring station, report upload function should be enabled. If enabled, notifies the central station by sending alarm report if alarm event occurs from the security system.

Contact ID Event Code and Content

Event Code	Event Content	Event Code	Event Content
3401	Arm	1137	Control Panel Tamper Alarm
1401	Disarm	1144	Detector Tamper Alarm
1132	PIR Motion Sensor Alarm	1140	Normal Alarm
1131	Window/Door Sensor Alarm	1133	24H Alarm
1100	Emergency call	1384	Detector Low Battery
1125	Duress Alarm	1302	Control Panel Low Battery
3456	Stay Arm	1301	Control Panel AC Power Lost



Change Language

Send this operation code from your cell phone:

1234#8

81

82

83

SMS reply you will receive:

81:English
82:Customized Language
83:Customized Language

Language has been changed to "English"

Language has been changed to ***

Language has been changed to ***



Electrical Facility Control:

User can use phone remotely turn on electronic facilities like lights, or fences to deter the intruder immediately in the event of alarm.

SMS reply you will receive:

90

Electrical Facility Off.

91

Electrical Facility On.

Note! Electrical Facility is Off as default.
To activate electrical facility, AC power of control panel must be on.



Change your Remote Control Names:

password#10

Note! After keyfob names are changed, and the SMS alert of keyfob operation is enabled, you can easily get to know who and when they arm or disarm the system.

Character Limits

20 characters for English.

1: Keyfob 1
2: Keyfob 2
3: Keyfob 3
4: Keyfob 4
5: Keyfob 5
6: Keyfob 6
7: Keyfob 7
8: Keyfob 8
9: Keyfob 9
10: Keyfob 10

Keyfob Name Changed.

1. Sam
2. Lisa
3. David
4. Gloria
5. Ross
6. Keyfob 6
7. Keyfob 7
8. Keyfob 8
9. Keyfob 9
10. Keyfob 10



GSM Signal:

When the GSM signal is lost the system will raise an alarm.

When GSM signal lower than 20, the system will send SMS notification.

Sending SMS to activation/deactivation:

92

Bad GSM Signal

93

GSM Signal Strength Monitoring:ON

GSM Signal Strength Monitoring:OFF (Default)



Checking the Detector Fault

This function is enabled as default. System will automatically checking all detectors per 12 hours. If there any detector power off or detector fault. You will always be informed with SMS text message such as XXX Detector fault.

Password#a1

Checking the detector fault:Off

Password#a2

Checking the detector fault: On



Other System Alert SMS

"*****"Alarm!

"*****"Detector Low Battery!

"*****"Detector Tamper Alarm!

Please Enter Correct Command Code!

Control Panel AC Power Lost!

Control Panel AC Power Recovery!

Control Panel Low Battery!

Emergency Call!



Phone Remote Control

In the event the alarm, the alarm system will call the preset phone number, user can pick up the phone , monitor the site, and remotely control system by entering below numbers.

Disarm the system, press 0;

Arm the system in the away mode, press 1;

Turn on on site siren, press 7;

Turn off on site siren, press 8;

Turn on AC facility, press 5;

Turn off AC facility, press 6;

Monitor the site, press * key;

Press escape (#) or hang up to exit.



Specifications

Product Name :	GSM/WCDMA SMS Security Alarm System
Control Panel's Power Supply :	Input: AC 110~240V/50~60Hz Output: DC 12V/1000mA
Built in Battery:	Max Output: DC 8.4V
GSM Working Frequency :	850/900/1800/1900MHz
Standby Current :	60 mA without power supply. 120 mA when power supply on.
Alarm Maximum Current	≥300mA
Internal Battery Backup :	Lithium Battery: 7.4V/1000mAh
Internal siren :	90dB
Allowed Amount of Expandable Wireless Accessories	10pcs remote controls 50pcs wireless accessories
Radio Frequency	315MHz / 433MHz (±75KHz)
Housing Material	ABS plastic
Operation Condition:	Temperature: -20°C~55°C Humidity: ≤ 80%(non-condensing)
Size (L x W x H) :	18×12.6×2.6cm



Specifications

Power Supply:	DC1.5V (AA 1.5V Lr6 Battery x1)(EXCELL, GP)
Standby Current:	≤20 μA
Transmit Current:	≤70mA
Wireless Transmit Distance:	≤80m (in Open Area)
Wireless RF Frequency:	315MHz/433Hz (±75KHz)
Temperature/Humidity:	-10°C-55°C/≤80% (Non-condensing)
Dimensions (L x W x H):	48 x 71 x 18mm



Specifications:

Power Supply:	DC 3V (AA 1.5V LR6 Battery x 2pcs)(EXCELL, GP)
Standby Current:	≤80 μA
Transmit Current:	≤37mA
Detection Area:	7-8m/110°
Wireless Transmit Distance:	≤80m (in open area)
Wireless RF Frequency:	315MHz/433MHz(±75KHz)
Temperature/Humidity:	-10°C-55°C/≤80% (non-condensing)
Detector Dimensions (LxWxH):	90*52*36.5mm
Bracket Dimensions (LxWxH):	48*26*29mm



Specifications:

Power Supply:	DC 3V (2pcs CR2032 button cell batteries)
Transmit Current:	≤25mA
Wireless Transmit Distance:	≤80m (in open area)
Transmitting Frequency:	315MHz/433MHz (±75KHz)
Housing Material:	ABS plastic
Working Temperature:	-10°C-55°C
Humidity:	Up to 80% (non-condensing)
Dimension(L/W/H):	35x70x12 mm



Frequently Asked Questions

1. I want to know which room alarms, how to setup?

There're 6 wireless zone, 2 emergency zone, and 2 wired zone, name of wired zone cannot be changed.

Step 1: Set the wireless sensors in same room at the same zone, following the instruction image of zone jumper setup on manual Page20-21.

Step 2: Sending the text command "password#6" to change the zone name for different rooms by better memory. When alarm occurs, you will get the notified SMS text message of zone alarm information, such as "bedroom alarm!"

Note! 24H zone is for emergency use, especially for smoke alarm, gas detector. Once it's triggered, the system goes alarm immediately no matter what status is.

2. Will my alarm system work in the event of a power failure?

Yes, They system has rechargeable back-up batteries which can support it working for 16 hours. When the power is recovered, the battery will be recharged. You will get the text of "Control panel AC recovery".

Adapter wire cannot be cut to make sure enough power to the panel.

3. The Sim Card was installed in the control panel, but it cannot connect to the GSM cellular network.

A. The Alarm System support only GSM Sim Card, Sim Card for CDMA network will not work.

B. Make sure to slide the power switch to ON position after sim card is inserted.

C. Watch the Power LED light, if LED flashes quickly in red or yellow, the system is still searching GSM signal.If the GSM signal is not found for long time,please move the control panel near the outside wall or window to improve the signal reception.

D. SIM card must be activated, and make sure there's enough credit in the sim card.

4. How to download the apps for Maxkin alarm system?

Go to App Store or Google Play to download the application by entering the keyword of "Ontips".

5. If someone arm or disarm the system, will I be notified?

Yes. If you using SMS text commands or apps to control the system, you will get reply as well. If you need the SMS alerts of remote control operation, you have turn on the function of SMS Alert for Keyfob Operation, Please send "Password#75" to activate it.

Wireless Door/Window Sensor

1. Why departing the door transmitter and magnet, doesn't trigger the alarm?

A. Make sure the LED indicator light up red when it's departed from the magnet, if not, the door sensor is in low battery, please replace it.

B. Check if the magnet is on the left of transmitter.

C. If the door is in metal material, the signal will be interfered.

D. Please make sure the distance between transmitter and magnet is more than 2cm.

E. Make sure the insider battery contact well or not.

F. Check the board put well or not.

G. If zone jumper is changed, please enroll the sensor to the system again.

2. Why the door sensor beeps?

If the LED indicator flashes 5 times, and buzzer beeps 5 times, please check if the sensor is in low battery or tamper alarm according to the SMS received.

If it's low battery, please replace the battery; If it's tamper alarm, check if the tamper switch is triggered or any intruders break in.

Wireless Remote Control

1. When you arm and disarm the system by the remote control, the control panel doesn't response.

A. Make sure you've pressed the arm/disarm button more than 2 seconds. (Don't release it too fast, otherwise the system will not get the signal)

B. When you press the button, the LED light up in red, if there's no LED light, please replace the battery.

PIR Motion Detector

1. Why PIR Motion Detector beeps without detecting intruders?

If PIR Motion Detector beeps, and LED indicator flashes continuously, the detector is in low battery. Please change the battery immediately.

2. Why PIR Motion detector does not detect movement?

- A.** Please make sure the control panel is in arming status, not at stay (home) mode or disarming status.
- B.** Please make sure the LED of PIR motion detector lights up when you walk in the detection area.
- C.** Movement should cross the detection and within 8 meters range.
- D.** The detector enters sleeping mode to save power after first detection. If there's no movement within 4 minutes, the detector goes back to the working state. If there's detection occurs within 4 minutes, the time detector goes back to working state will be added accordingly.
- E.** Make sure the insider battery contact well or not.
- F.** Check the board put well or not.
- G.** If zone jumper is changed, please enroll the sensor to the system again.

3. If the PIR motion detector pet-immunity?

No. The PIR supplied in standard kit is normal PIR. If you have pets at home, please adjust the installing height to allow your pets to roam below the mounting height of the unit without causing alarms.

4. There's no one passerby the room, but the detector trigger the alarm

- A.** Check if there's any pet at home, the PIR supplied in the standard kit is normal one, not pet-immune one.
- B.** Please avoid mounting the P.I.R. motion detector at the place where rapid heat changes such as window, air conditioner, light, electric heater, refrigerator, oven, stove etc.
- C.** Avoid strong sunlight.
- D.** The installation height and range should be in the detection area.

App Setting

1. Can the apps be used by more than one user?

Yes. Operation steps are as below:

- 1. The administrator (who is first use the APP) should firstly store all phone number list that will use the APP.
- 2. Second user also need to create your account, when you entered into the APP interface, you should store the phone number of the first person's.
- 3. The third person should done so as step 2.

2. When programming on the mobile apps, there's no reply from the control panel.

Control panel reply every programming, users have to wait the SMS REPLY and then do the next step.